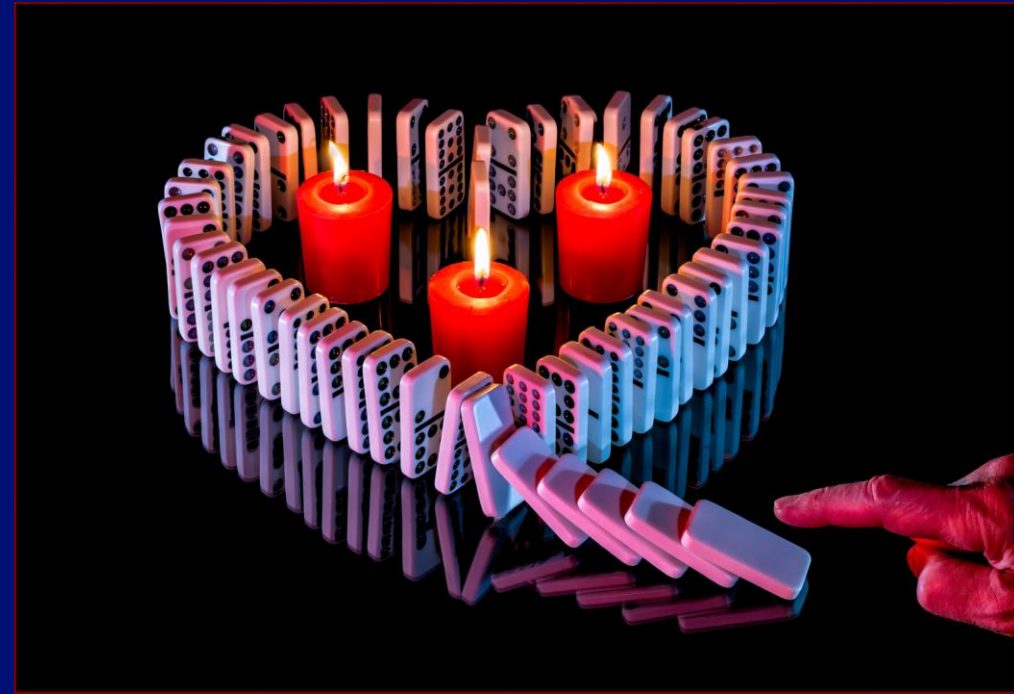


# Using Reflective Surfaces Tips

A 10-Minute Mentor Night Kickoff



The dual nature of reflections - their potential to either enhance or detract!

Chane Cullens  
May 1, 2025

# Controlling the Reflection – Position & Presence

## Camera Position is Key

- Change your viewpoint to change the reflection.
- Get low and close to make the reflection appear larger.



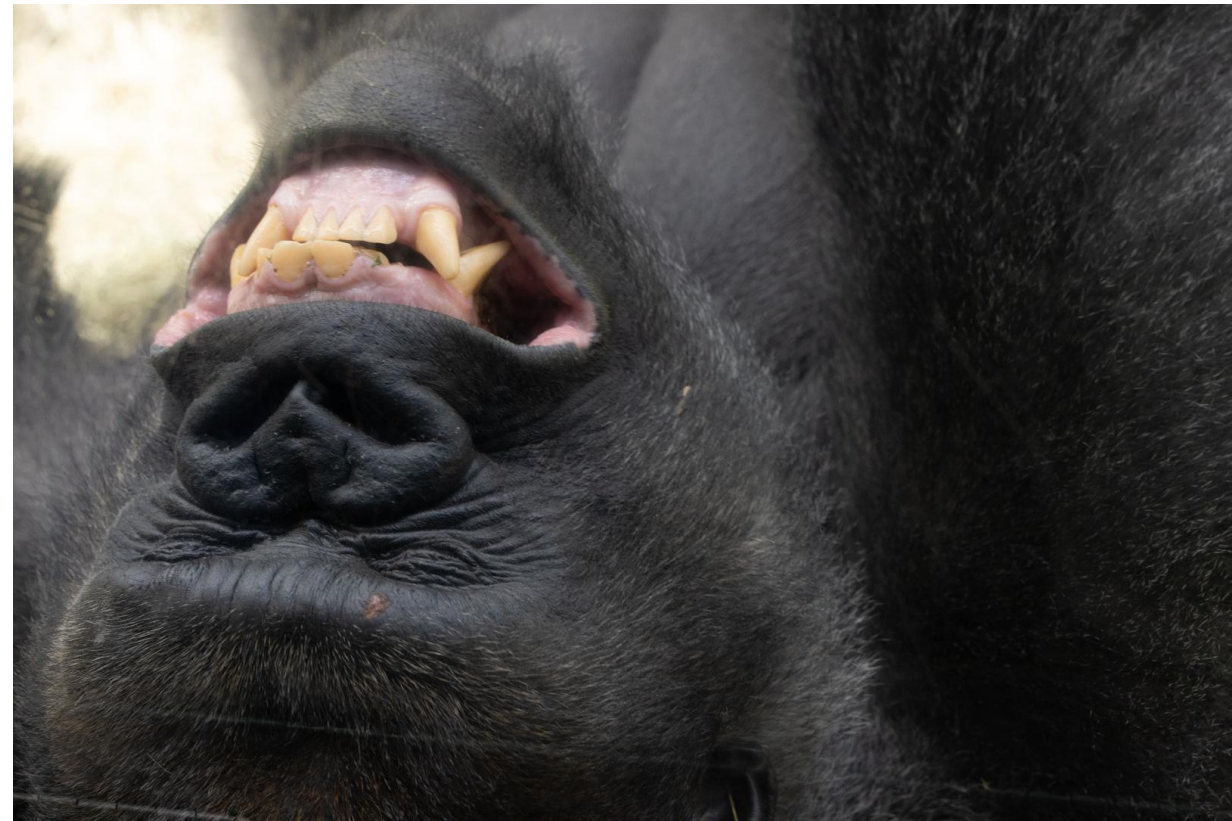
## Preventing Your Own Reflection

- When you can't angle the camera away...
- Use a large black sheet/card with a hole cut out for the lens.
- This replaces your reflection with black.



# Camera Position Reflections

Move 5 feet





# Camera Position Reflections

Note the reflection of the face  
on the back of the gorilla's head

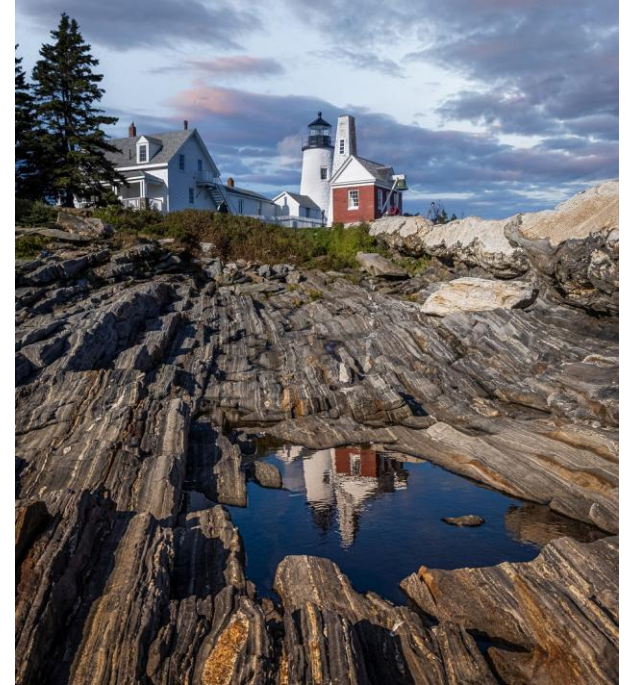




# Managing Focus & Glare - Aperture & Light

## Use Aperture for Focus Control

- Aperture controls depth of focus (sharpness zone).
- Small aperture number (e.g., f/1.8, f/2.8) = few items in focus
- Focus on the subject? the reflection? (further away) can become blurry.
- Large aperture number (e.g., f/11, f/16) = more items in focus



## Tackle Glare

- Glare = harsh bright spots from direct light.
- Look for it in the viewfinder/live view *before* shooting.
- Solution: Change camera perspective slightly OR move the light source.



# Surface Prep & A Pro Tip – Cleanliness & Gear

## Keep Surfaces Spotless!

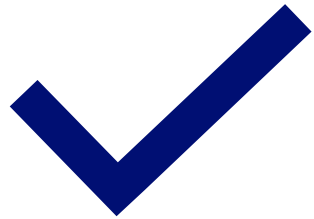
- Reflective surfaces show *everything*: dust, smudges, lint.
- Especially noticeable on dark, smooth surfaces (like black acrylic).
- Clean meticulously right before and **during** the shoot.

## Pro Tip: Dedicated Reflective Surface

- For controlled shots (still life), use a reflective sheet.
- Example: Reflective Black Acrylic Sheet (search Amazon; "Limo" brand looks OK)
- Ensures consistent results.



# Summary & Key Takeaways



## Recap:

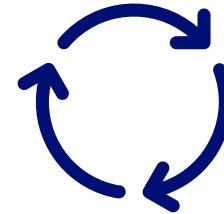
**Position:** Controls reflection content & size.

**Hide Yourself:** Black sheet technique.

**Focus:** Aperture controls reflection sharpness.

**Glare:** Adjust camera or light angle.

**Cleanliness:** Essential, especially on dark surfaces.



## Final Thought:

Success comes from thoughtful control of position, light, focus, and environment.

Directed Playing Helps!